

Shared Micromobility in Alki

Alki Community Council + SDOT

Presented By: Stefan Winkler

Date: May 21, 2026

Our Vision

Seattle is an equitable, vibrant, and diverse city where moving around is safe, fair, and sustainable. All people and businesses can access their daily needs and feel connected to their community.

Values & Goals

- Safety
- Equity
- Sustainability
- Mobility & Economic Vitality
- Livability
- Maintenance & Modernization
- Excellence

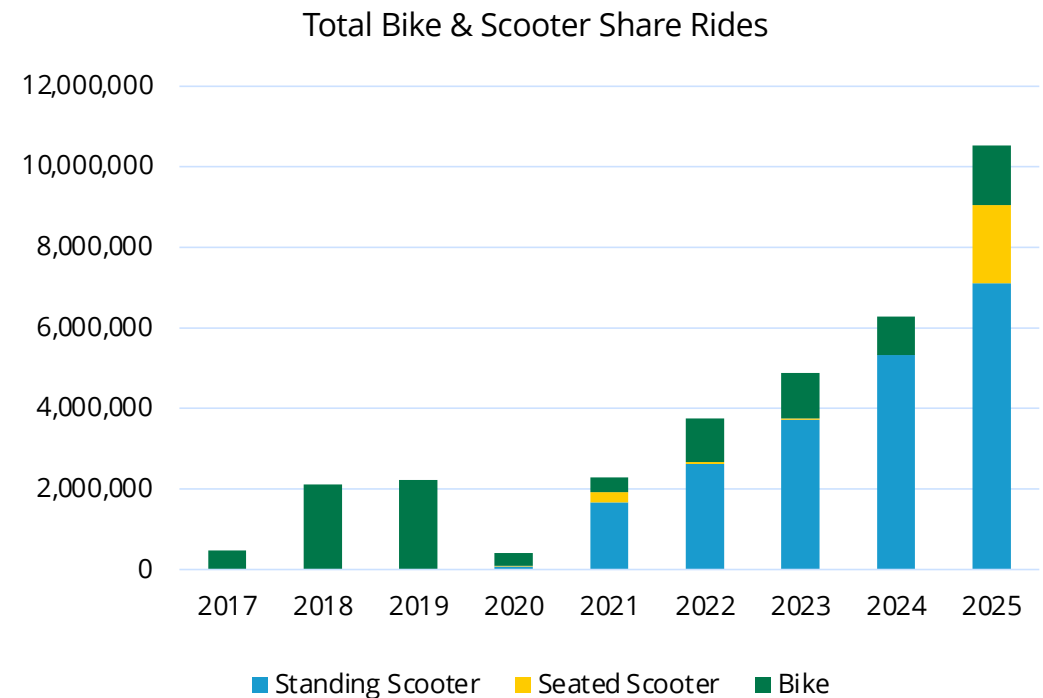


Topics

- Program background
- Updates this year
- Management in the Alki neighborhood

Shared micromobility by the numbers

- 10.5 million+ trips in 2025
- 1.1 million+ unique riders
- 10% of trips are reduced-fare
- Current deployment ~14,100 devices total



Program basics

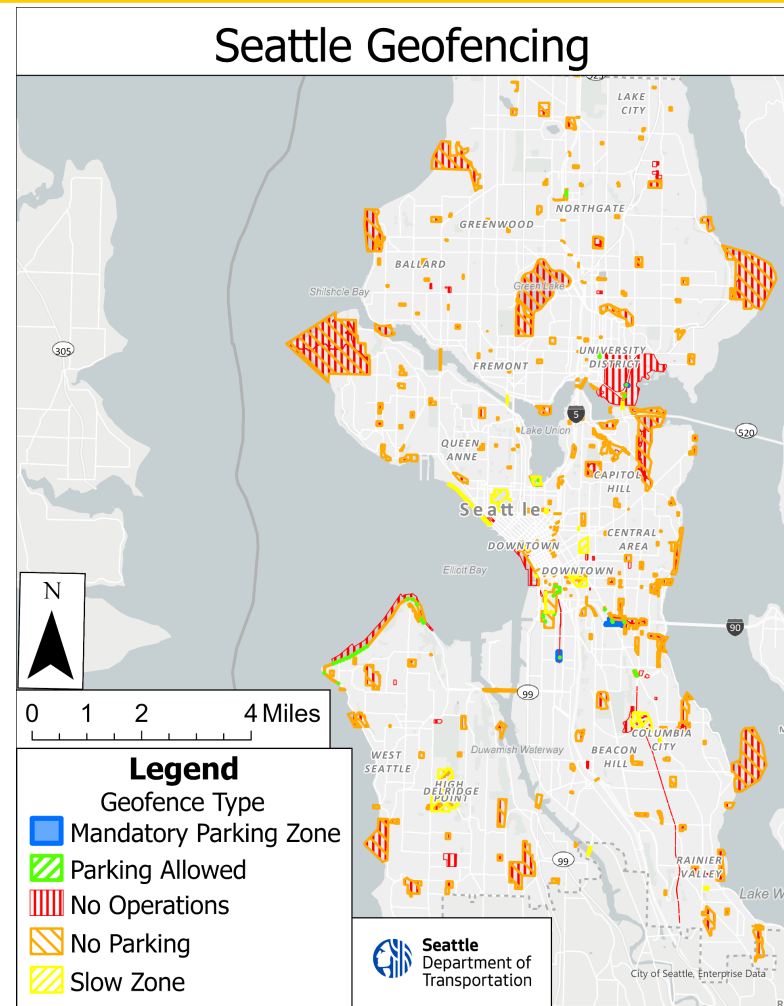
- Free-floating micromobility (bikes) since 2017; added scooters in 2020
- Permit program: vendors pay fees to operate
- SDOT maintains relationships with vendors, sets performance expectations, enforces permit requirements
- Permit fees cover the cost of operating the program

Strengthened permit conditions

- Updated permit conditions began April 1. These include:
 - Sidewalk riding detection
 - Rider behavior detection
 - Increased parking fines
 - Increased insurance requirements
 - More than 50% seated devices
 - Increased equity deployment
- Lime is sole provider through 2026, as SDOT evaluates program
- SDOT can publish updated permit conditions any time

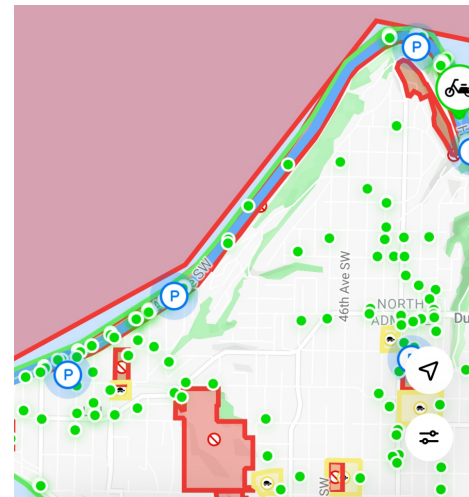
Geofencing

- Relies on GPS technology; works best for larger areas (i.e. sidewalks are a challenge)
- Includes:
 - No-ride zones
 - Slow zones
 - No-parking zones

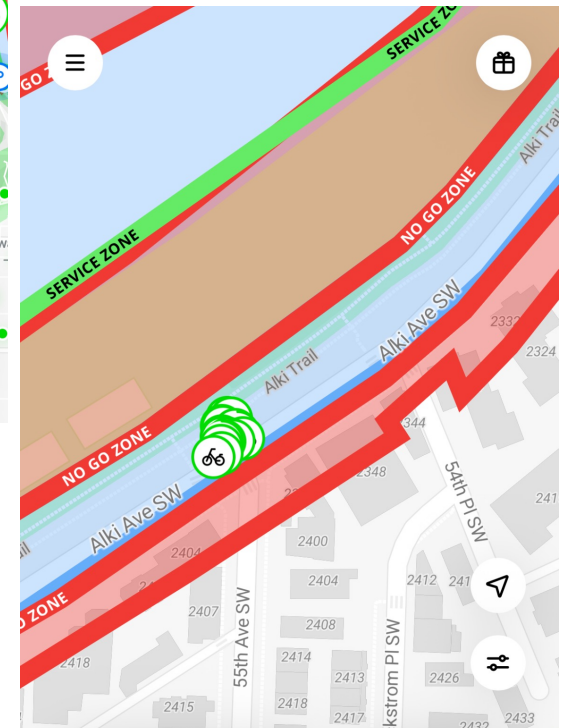


Approach in Alki

- Since 2020: parking only allowed at corrals
- Riding is allowed on shared use path next to the beach
- Spring 2026: added a no operations zone along south side (away from the water) between 63rd Ave SW and the Water Taxi dock
- Lime conducting increased sweeps and foot patrols to tidy parking; Lime can investigate reports of specific incidents with location, time data



Area geofence overview



Zoom in showing more detailed look at geofences, with no ride zones in the park and on the south side of Alki Ave SW (red). Riding is allowed in the street and on the shared use path on the north/water side. Parking is allowed at designated areas such as the cluster of Lime devices shown near 55th Ave SW.

Questions?

Contact

Stay in touch:



Becky.Edmonds@seattle.gov



206 305-8029



seattle.gov/transportation/bikeshare