

PAVING NOTICE

Olson Pl SW between 1st Ave S and 2nd Ave SW
Saturday July 26th and Sunday July 27th, 2025
8 AM – 5 PM

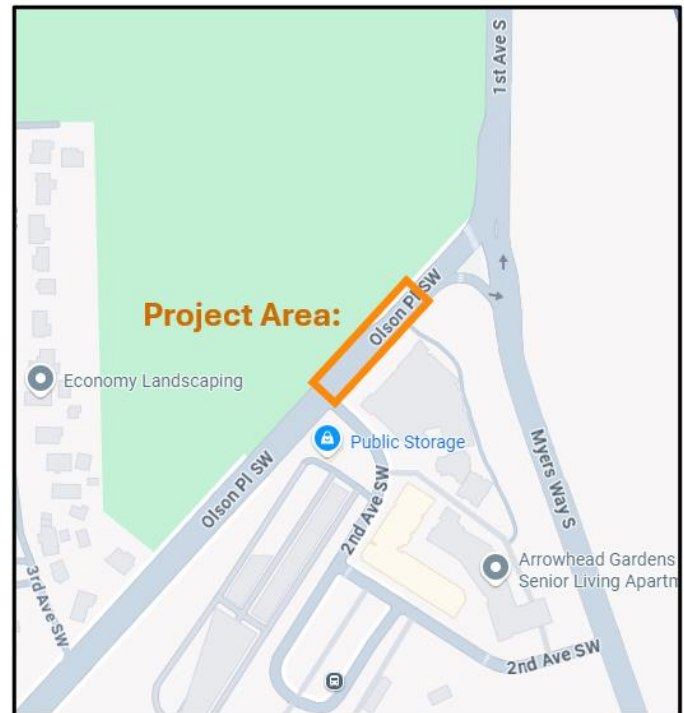
*Weather permitting

- **SDOT will remove and repave the top 2 inches of the street at the location listed above.**
 - The project will connect to previous SDOT paving projects on 1st Ave S and Myers Way S.
 - SDOT constructed new curb ramps at Myers Way S and 2nd Ave SW in support of these paving projects.

- **Sidewalk access will not be impacted.**

- **Traffic Impacts:**

- **The travel lanes on Olson Pl SW will be reduced and shifted during work hours.**
- **Access between 2nd Ave SW and Olson Pl SW will be closed during work hours.**
 - SDOT will have a flagger at the intersection and will allow access to the extent possible, but only intermittent access will be allowed.
 - Access between 2nd Ave SW and Myers Way S will not be affected.
- **All streets will be fully open during non-work hours.**



Thank you for your cooperation!

This project is part of SDOT's Arterial Major Maintenance (AMM) program, which is funded by the Seattle Transportation Levy.



CONTACT

Paul Pablo, Paulino.Pablo@seattle.gov
C J Jackson, Christopher.Jackson@seattle.gov
www.seattle.gov/transportation
For interpretation services, please call (206) 733-9990



Seattle
Department of
Transportation