

An aerial photograph of Seattle, Washington, taken during the "golden hour" of sunset. The city's skyline is visible on the left, with numerous skyscrapers and buildings. The Space Needle is prominent on the right side of the skyline. The city extends to the waterfront, where many smaller buildings and parking lots are visible. The water of the Puget Sound is in the background, with distant hills visible on the horizon. The sky is a mix of blue and orange, with some clouds.

Progress on One Seattle Homelessness Action Plan

February 16, 2024

Deputy Mayor Tiffany Washington

Our homelessness goals fall into three areas:



Building more housing – especially affordable housing – faster
Effort led by Office of Housing, supported by SDCI



Bringing people indoors and supporting a pathway to stability
Effort led by KCRHA



Keeping public spaces clean, open, and accessible to all
Effort led by Unified Care Team





More Affordable Housing, Faster

Affordable housing units opened in 2023

+1,400 homes

-282 days

of days saved by design review exemption

Affordable housing units already funded and under development

+7,600 homes

Less than 1 year

89% of permits approved in less than 1 year (253-day average)

To be funded by new housing levy over next seven years

+3,100 homes

- Office of Housing
- Department of Construction and Inspections



Seattle Homelessness Response System

PREVENTION



*Keeping People
in their Homes*

*Rental assistance and
tenant supports*

EMERGENCY



Homeless Services System

*Places for people to go
when they are unsheltered*

HOUSING SUPPORTS



Permanent Housing

*One-time, short-term, and
long-term supports*



Understanding Partnership Roles



Seattle



KCRHA
King County Regional Homelessness Authority

Housing Capital and Development	✓	
Prevention & Community Stability	✓	
CoC Funded Programs		✓
Shelter programs	✱	✓
Diversion programs		✓
Rapid Rehousing		✓
Coordinated Entry		✓
HMIS		✓
Outreach	✓	✓
Encampment Cleans & Removals	✓	✱



The Unified Care Team



Where We Were

January 2022



Estimated 1,000 tents and 300+ RVs



Backlog of ~10K Encampment
Constituent Service Requests



Multiple City departments working
different parts of the same problem
in silos



Information about encampments
tracked by hand, stored in
spreadsheets, updated infrequently

Where We Are

As of January 2024



523 verified tent count
227 verified RV count



41K Customer Service Requests
triaged in < 3 days in 2023



One collaborative, coordinated effort
to provide a holistic response



Database of citywide encampments,
updated daily, includes public impact
scoring



Unified Care Team - A One Seattle Approach

Ensuring Seattle streets, sidewalks, and public spaces are clean, open, and accessible to all.



2023 UCT Highlights

20% Increase in shelter referrals over 2022	11K+ Visits by UCT crews to clean sites	5.9M Pounds of debris removed from encampments
41K+ Customer Service Requests triaged < 3 days	24% Decrease in verified tent count citywide since Jan 2023	12K+ Site inspections completed



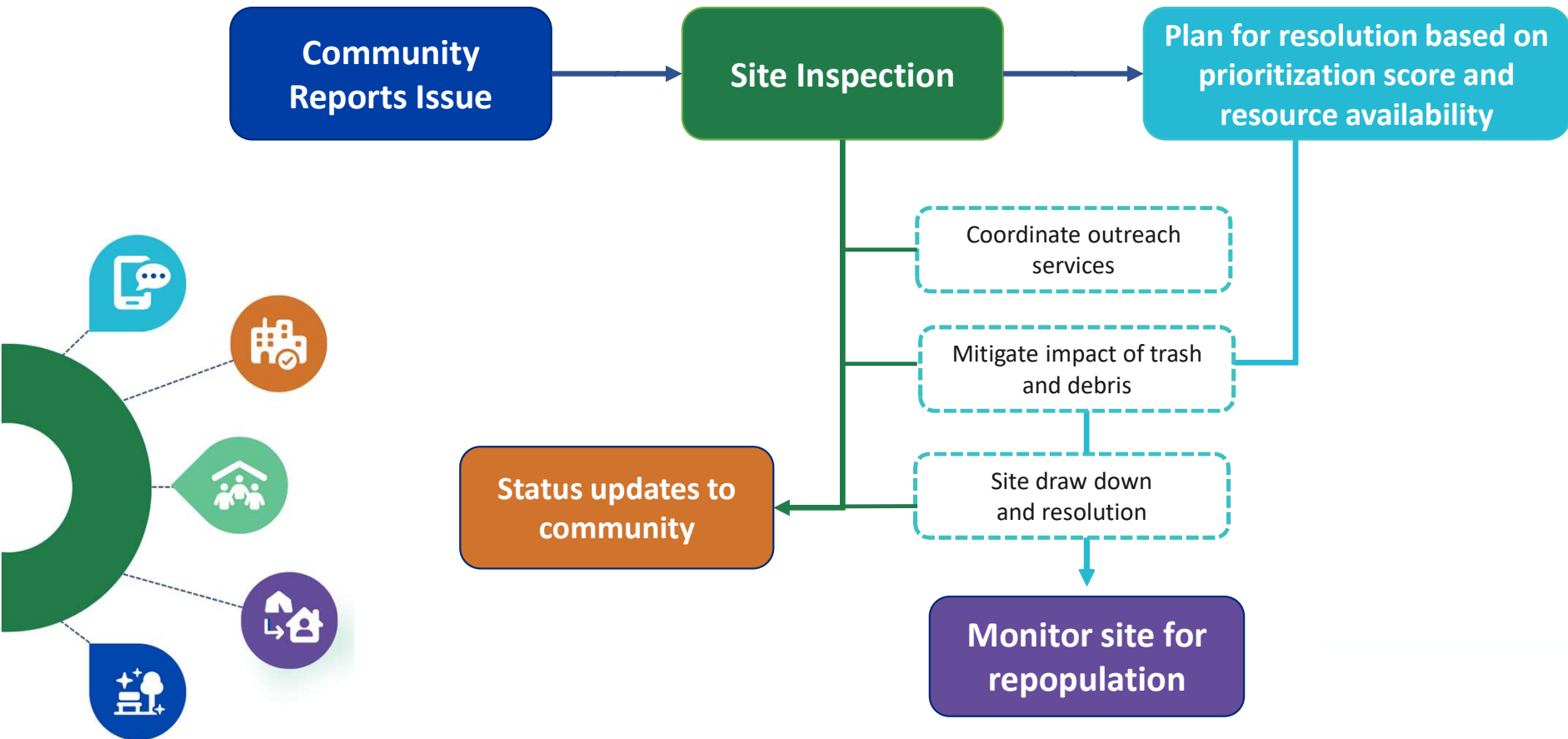
Rules Governing Encampment Removals

MDAR 17-01 and FAS 17-01 ("MDARs") cover four main areas:

- The amount of **notice** required prior to moving an encampment
- Guard rails around when and how we address **hazards and obstructions**
- Requirements for **offers of shelter** prior to a removal
- Storing and providing access to **personal property** removed

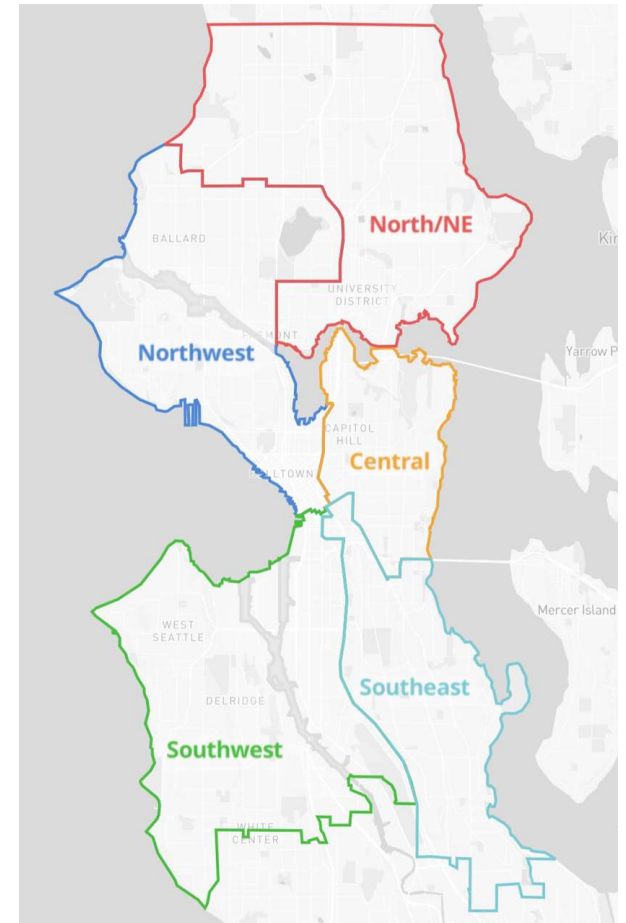


Encampment Work Cycle



Neighborhood Team Model

- 5 teams, 1 per geographic area
- Each team conducts:
 - Inspections
 - Outreach
 - Removals
 - General cleaning
 - RV remediation and geo-cleaning
 - Ticketing and towing (parking enforcement)
 - Community engagement



Public Impact Scoring and Site Prioritization

Points Assigned by Site Attributes (Inspections)

+2 Full mobility impact

+1 Partial mobility impact

+1 Blocking entrance

+1 Large amounts of debris

+1 Blocking sight line

+1 Within RSE Priority Area

+1 Insufficient clearance for a wheelchair

+1 Near children/playground

+1 Within public school walk zone

+1 Chemical/hazard

+1 Near waterway

+1 Per 5 RVs

Points Assigned by Proximity

+1 History of encampment fires in proximity within the last 6 months

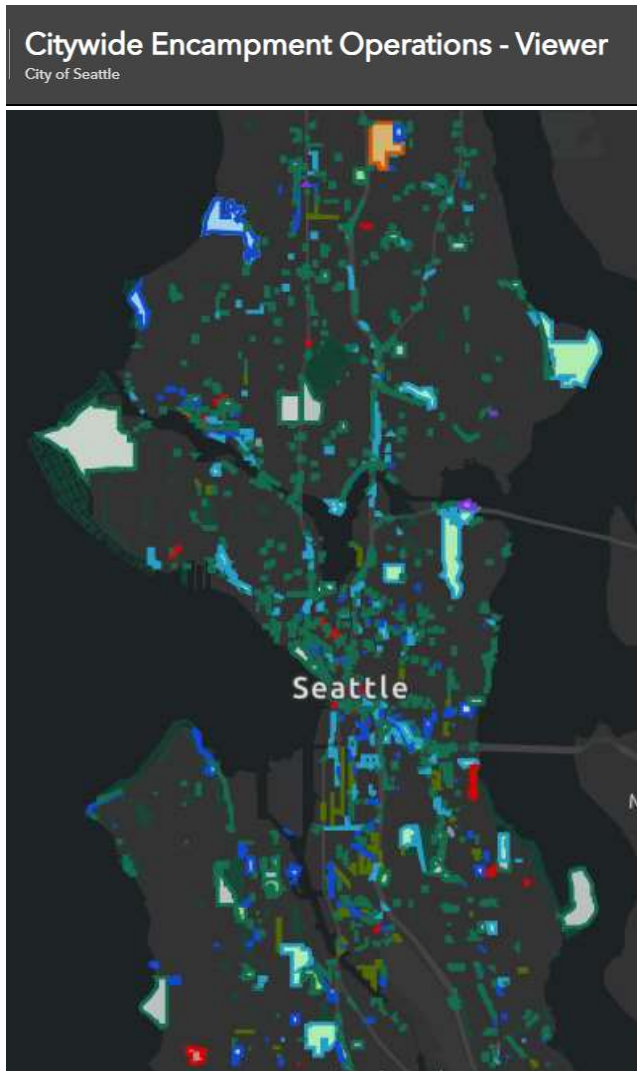
+1 History of violent crime incidents in proximity within the last 6 months

Verified and Confirmed Public Safety

+3 Recent significant violent crime

+2 Recent non-VC shots fired

+2 Recent significant encampment fires



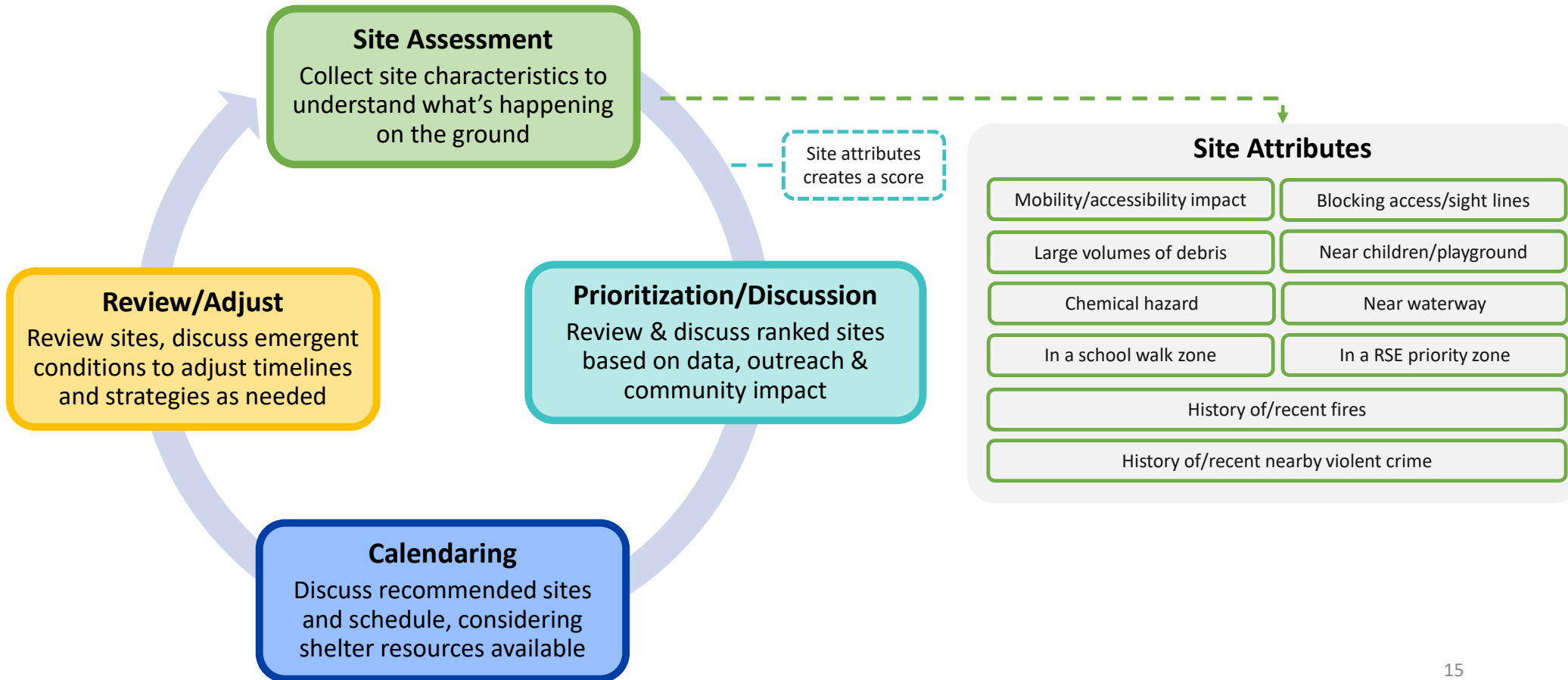
Data-Informed Encampment Response

Our standardized data system contributes to:

- Equity
- Consistency
- Understanding of conditions on the ground

Prioritization is more than the points

A dynamic data- and people-informed approach to site resolution.



Public Safety Encampment Data

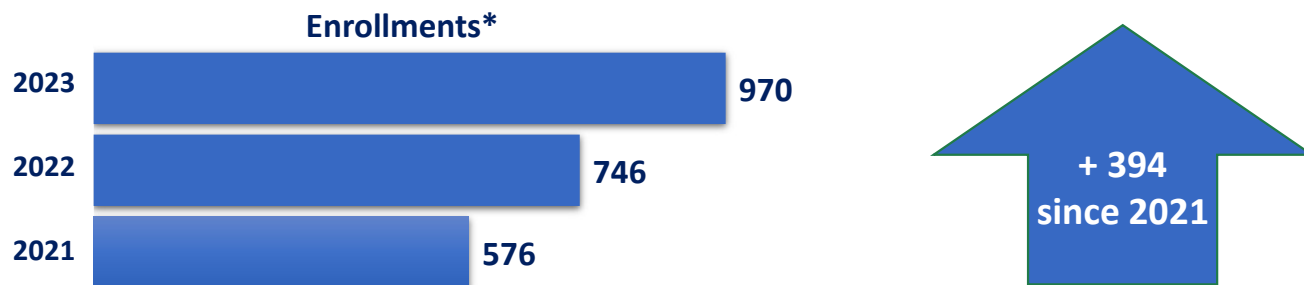
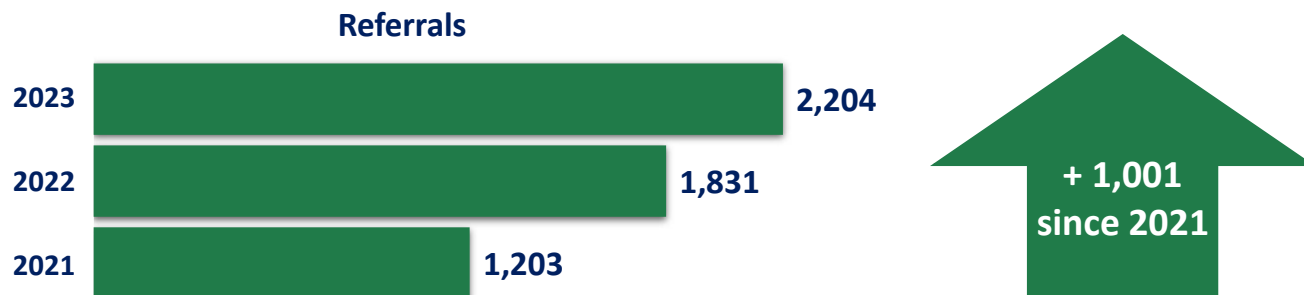
We believe this data shows our prioritization process is helping reduce many of the dangerous or violent elements we see at some encampments.

Addressing the highest impact sites first appears to be contributing to a reduction in fires and shots fired.

	2022	2023	% Change
Shots fired	116	69	-41%
Fires	1,617	1,351	-16%
Medical response calls	12,138	12,946	+7%



Shelter Referrals & Enrollment



*Confirmed shelter enrollments are an undercount due to several challenges in the data match required between UCT and HMIS that include approx. 25% of HMIS enrollments with anonymized PII, individuals providing different PII to UCT/HMIS; individuals enrolling over 48 hours after a referral; or individuals enrolling at a different shelter than referred.



Top Challenges

- Limited RV solutions
- Public safety intersection
- Lack of substance use treatment and behavioral health options
- Moving people from shelter to permanent housing
- Frequent repopulation of sites



An aerial photograph of a city skyline at sunset. The city is densely packed with buildings, and the sky is a mix of orange, yellow, and blue. The water is visible in the background, with a few boats and a bridge in the distance. The overall mood is serene and urban.

Summary

- We've made progress on Homelessness Action Plan goals
- Our partnership with KCRHA continues with a focus on improving system performance
- The UCT Neighborhood model and data infrastructure provides a strong foundation for continued progress
- More than 7,600 affordable homes are currently under development, with at least 3,100 more to be funded by new housing levy
- Citywide tent and RV counts have decreased significantly
- 2023 shelter referrals and enrollments are at record levels