

Crossing Improvements

January Update

Roxbury St and Olson Pl SW

In March 2020, the Seattle Department of Transportation (SDOT) closed the West Seattle High-Rise Bridge to traffic in the interest of public safety due to the accelerated growth of new and existing structural cracks. Shortly after, we launched Reconnect West Seattle to support neighborhoods impacted by the closure — providing improvements to calm traffic and improve pedestrian mobility and neighborhood livability. Find out the status of these improvements in this latest update.



Seattle
Department of
Transportation

Work on crossing improvements at SW Roxbury St and Olson Pl SW is restarting and will continue through winter and spring.

JANUARY 2024

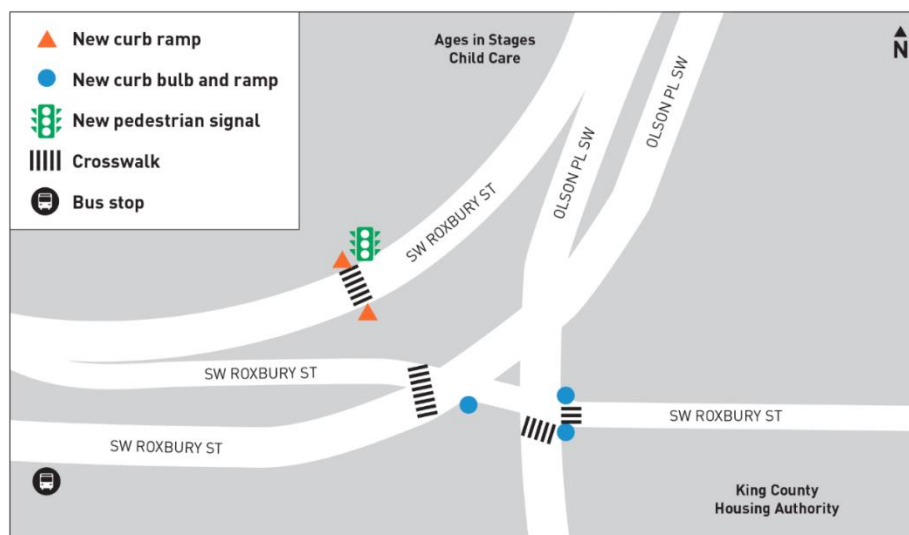
Construction of safety improvements for people walking or rolling at the SW Roxbury St and Olson Pl SW intersection began in May of 2023 and we are set to begin the second and final phase of construction.

The work during this first phase included:

- Shifting the crosswalks across SW Roxbury St so they're better aligned
- New curb bulbs that extend the sidewalk corners for people walking on the south side of the intersection
- Construction of curb ramps for improved ADA (Americans with Disabilities Act) accessibility
- Temporary crosswalks and stop bars
- Temporary barrier at the northeast corner until a permanent guardrail is installed
- Temporary push button pedestrian crossing at the east leg of SW Roxbury St

WHAT TO EXPECT IN THE COMING MONTHS

- Construction work will resume as early as this week
- Work hours are 7 AM to 4 PM, Monday through Friday
- East leg of SW Roxbury St will remain closed for equipment staging and safety area and is local access only
- Work includes installation of new traffic signal poles and wiring, pedestrian signals, and work on sidewalk and road panels
- Painting permanent street markings
- New security guardrail on the northeast corner of the intersection
- Expect noise from equipment backup beeping and engine sounds
- This project is expected to be finalized as early as May 2024



Translation and Interpretation services available upon request: (206) 400-7511.

Dịch và thông dịch sẵn sàng nếu có sự yêu cầu (206) 400-7511.

Servicios de traducción e interpretación disponibles bajo petición (206) 400-7511.

Turjubaanka waxaa lagu heli karaa codsasho a (206) 400-7511.

요청하시면 번역이나 통역을 제공해드립니다 (206) 400-7511.

如果您需要此信息翻譯成中文 請致電 (206) 400-7511.

Tagalog mangyari lamang na tumawag sa (206) 400-7511.

የዚህን መረጃ ትርጉም ከፈለጉ፣ በዚህ ስልክ ቁጥር ይደውሉ፡ (206) 400-7511.

សំណើបកប្រែនិងការបកប្រែភាសាមានតាមការស្នើសុំតាមរយៈ លេខ : (២០៦) ៤០០-៧៥១១.

CONTACT

WestSeattleBridge@seattle.gov

(206) 400-7511